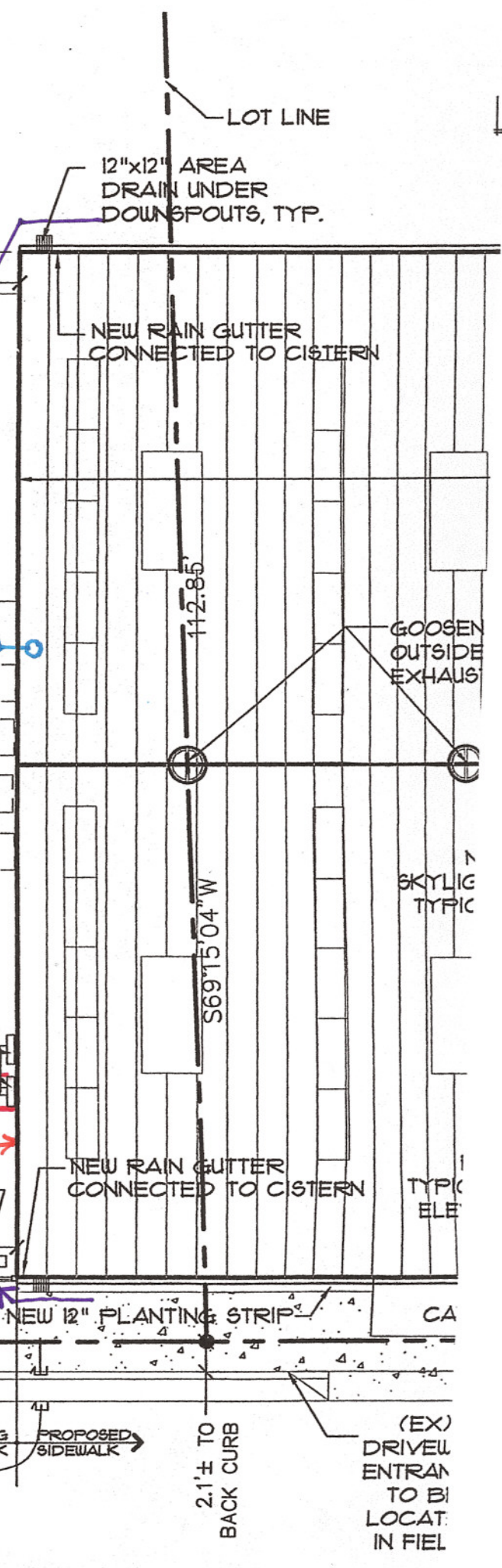
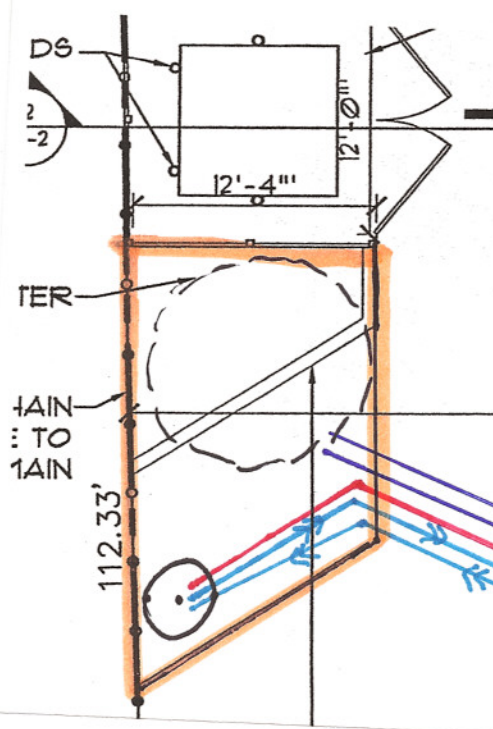


LOT 9
 0.137 Ac.
 5,981 Sq.Ft.



SPHALT

1 PARKING SPACES

- 2" PRESSURIZED FEED LINES FROM SUCCE PUMPS TO TANK
- ELECTRICAL
- 1" WIRSBO/PEX LINES FROM PUMP HOUSE 1) CITY FILL
- 4" PVC CONVEYANCE
- 2) TRAVELWAY

(EX) DRIVEWAY ENTRANCE V.I.F. EXACT LOCATION

EXISTING SIDEWALK

PROPOSED SIDEWALK

2.1'± TO BACK CURB

(EX) DRIVEWAY ENTRANCE TO BILOCAT. IN FIELD

BY D. NUIN